

Since 1955

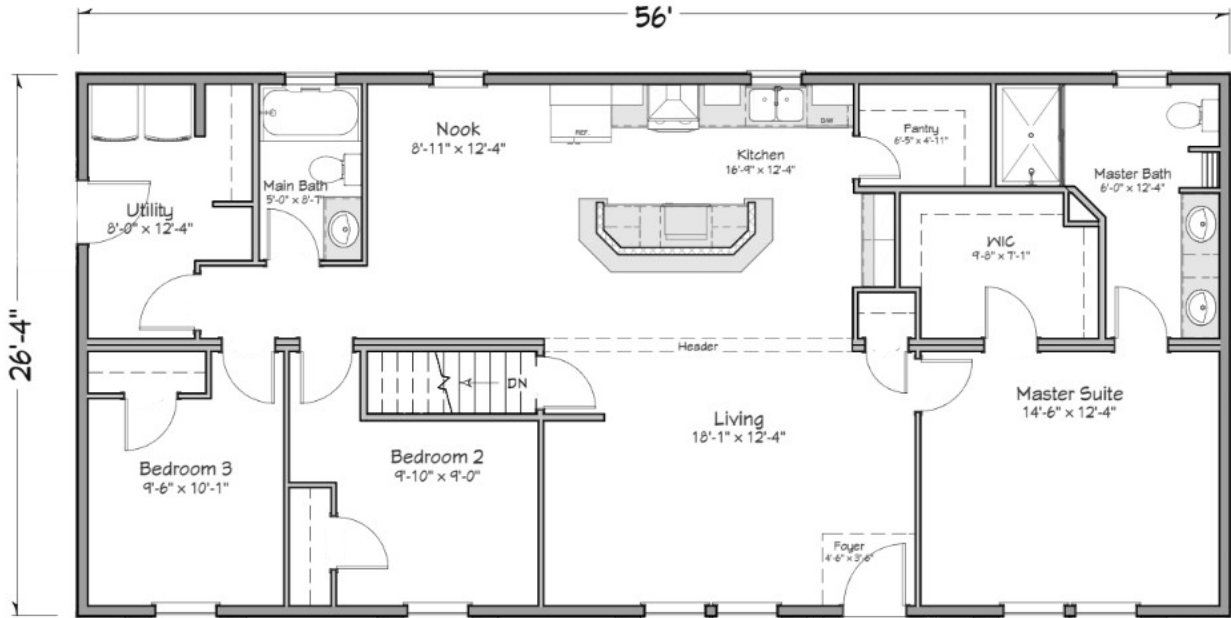


# PINE VIEW HOMES, INC.

499 Augusta Road, Winslow, ME 04901 (207)872-6259

[www.pineview1955.com](http://www.pineview1955.com)

## RITZ CRAFT MCKINLEY MODULAR 3 BEDROOMS, 2 BATHS, 28' X 56'



5/12 roof pitch, 22' double dormer, Whirlpool stainless steel appliance package – dishwasher, microwave over range, electric range, 24.6 cu ft refrigerator, Drywall Throughout, 200 AMP, Duma Wall shower in the master bath, Maple shaker cabinets, Vinyl Flooring Throughout

**Insulation Values: Roof R-30, Walls R-21**

**Exterior: Country Beige with Musket Brown Shutters**

**Price ~~\$235,000.00~~**

**Pine View Sale Price - \$230,000**

**PRICE INCLUDES: DELIVERY UP TO 75 MILES\* & SET-UP ON YOUR FOUNDATION, BASEMENT STAIRS, AND CRANE CHARGE INCLUDED**

**(Hook-up of utilities not included)**

**\*DELIVERY OVER 75 MILES SUBJECT TO ADDITIONAL CHARGES**

**Disclaimer: Due to continuous product development and improvement, prices and materials are subject to change without notice**

6/8/2023